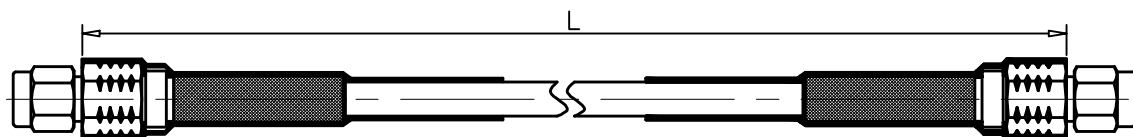


1		2		3		4	
RevNo	Revision note			Date	Signature	Checked	
00	Sketch Only			7/14/14	Teresa	Simon	



Interface of SMA connector Per: MIL-STD-348, IEC 60169-15
Material & Finishing:

SMA:

1. Center condutor: Brass Copper, Gold Plating
2. Insulators: PTFE
3. Spring Washer: Beryllium Copper
4. Body : Brass, Gold Plating
5. Coumping Nut: Brass, Gold
6. Crimp Ferrule: Brass. Nickel

Heat Shrink Tube: Polyolefine

Electrical Data:

1. Impedance: 50 Ohms
2. Frequency Range: DC to 18.0 GHz
3. Insulation Resistance: 1000 Megohms
4. Dielectric Withstanding Voltage: 750 V Min.
5. VSWR: ≤ 1.2
6. Insertion Loss:

ALL DIMENSIONS ARE IN MILLIMETERS AND [INCHES]

KERUI ELECTRONIC CO;LTD

THESE DRAWING & SPEC. ARE THE PROPERTY OF KERUI ELECTRONIC CO;LTD AND SHALL NOT BE REPRODUCED, OR COPIED OR USED AS THE BASIS FOR THE MANUFACTURE OR SALE OF APPARATUS OR DEVICES WITHOUT THEIR EXPRESS WRITTEN CONSENT.

UNLESS OTHERWISE NOTED ALL SURFACES FINISHED TO 64/MAX.
ALL TOLERANCES ARE:
DECIMALS FRACTIONS ANGLES
 $x \pm 1.0$ $\pm 1/64$ $x' \pm 1'$
 $x.x \pm 0.5$ $x'x' \pm 0.5$
 $x.xx \pm 0.1$

Title

SMA male to male
solder with maxishield 142 FJ cable

Drawn by
Teresa

Ckd by
Simon

Appd by
Richard

Date
7/14/2014

Scale
1:1

Sheet 1 of 1

C101101 13 33 01